

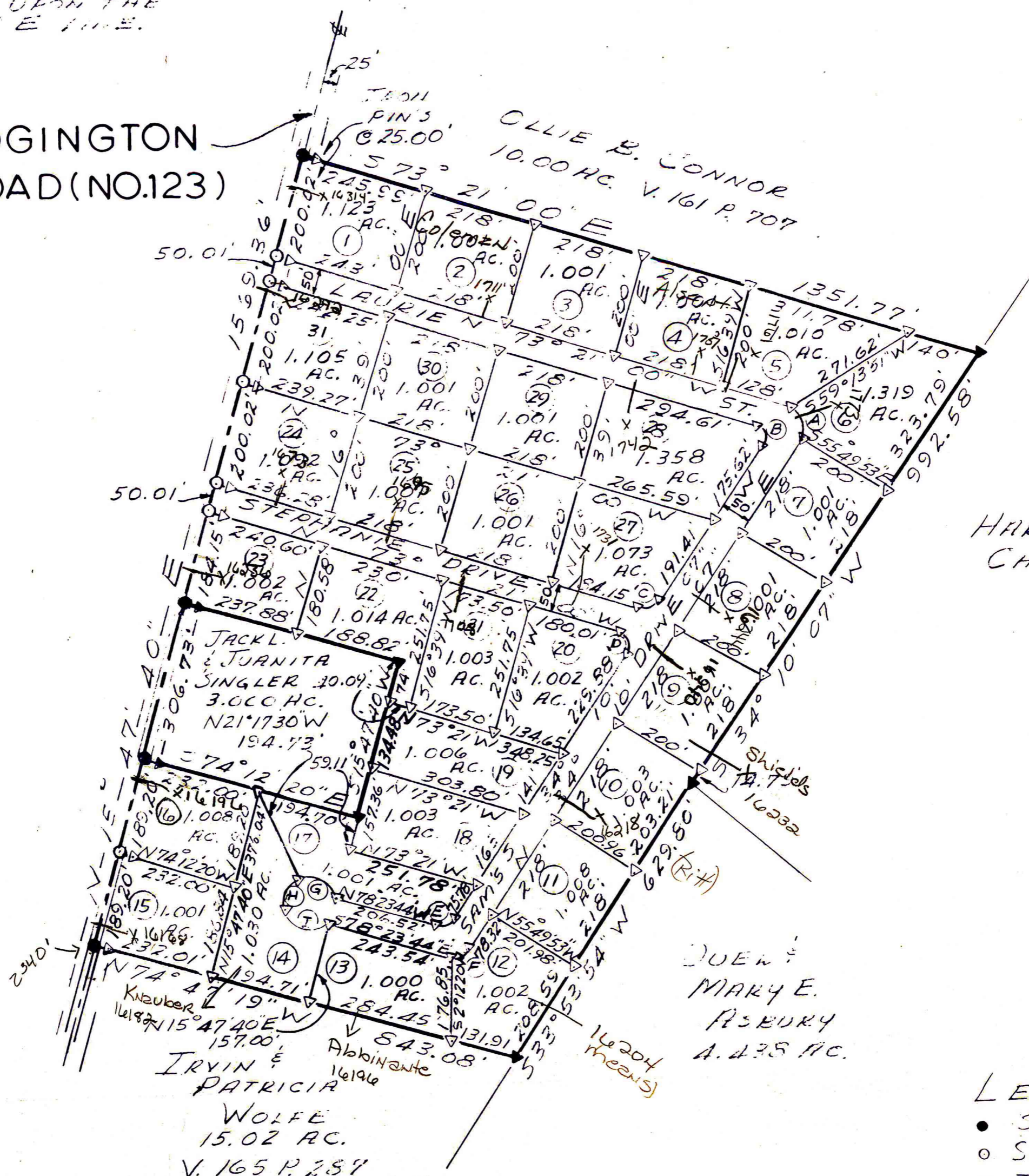
BEARINGS ARE MAGNETIC AND BASED UPON THE N15°47'40" E LINE.

EDGINGTON ROAD (NO.123)

0 200 400
SCALE: 1"=200'

CURVE DATA

- A Δ = 60°14'24"
ARC = 63.08'
CHORD = 514°35'27" E 60.22'
R = 60.00' T = 34.51'
- B Δ = 107°31'07"
ARC = 26.91'
CHORD = 519°35'27" E 40.33'
R = 25.00' T = 34.11'
- C Δ = 72°28'53"
ARC = 31.62'
CHORD = 570°14'34" W 29.55'
R = 25.00' T = 18.32'
- D Δ = 107°31'07"
ARC = 26.91'
CHORD = 519°35'27" E 40.33'
R = 25.00' T = 34.11'
- E Δ = 67°26'04"
ARC = 29.42'
CHORD = 567°53'12" W 27.75'
R = 25.00' T = 16.68'
- F Δ = 67°26'04"
ARC = 29.42'
CHORD = N67°53'12" E 27.75'
R = 25.00' T = 16.68'
- G Δ = 102°46'34"
ARC = 89.69'
CHORD = N65°40'41" W 78.14'
R = 50.00' T = 67.61'
- H Δ = 77°13'26"
ARC = 67.39'
CHORD = 524°19'13" W 62.40'
R = 50.00' T = 39.93'
- I Δ = 119°49'40"
ARC = 104.57'
CHORD = 574°12'20" E 86.53'
R = 50.00' T = 86.30'



HAROLD CHERTHAM

MARY E. RESBURY
A. 4.25 AC.

- LEGEND
- SPIKE FOUND
 - SPIKE SET
 - ▼ IRON PIN FOUND
 - ▽ 1" IRON PIN SET

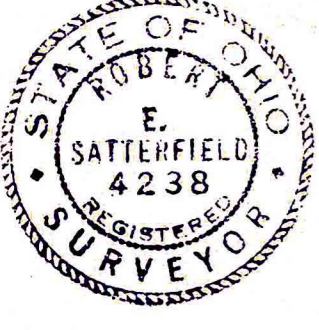
PREVIOUS TRANSFER
V. 209 P. 551
ORIG. 39.172 AC.

32.173 ACRES IN LOTS
4.667 ACRES IN ROADS
R/W OF EDGINGTON ROAD

THE PROMISED LAND SUBDIVISION

HENRY WHITING M.S. NO. 909
STERLING TOWNSHIP
BROWN COUNTY, OHIO

SCALE 1"=200' SEPTEMBER, 1984



COMMISSIONER'S APPROVAL

WE, THE UNDERSIGNED COMMISSIONERS OF BROWN COUNTY, OHIO, DO HEREBY APPROVE THIS PLAT OF "THE PROMISED LAND SUBDIVISION" AND DO AUTHORIZE THE RECORDER OF BROWN COUNTY, OHIO TO FILE THE PLAT FOR RECORD. WE SPECIFICALLY RESERVE OUR ACCEPTANCE OF THE ROADS IN THIS SUBDIVISION AS PUBLIC ROADS UNTIL SUCH TIME THEY HAVE BEEN APPROVED BY THE BROWN COUNTY ENGINEER.

ATTEST: James J. White CLERK
Carl Z. Burger
Edwin J. Hoff
Robert J. Thoresen
BROWN COUNTY COMMISSIONERS

CERTIFICATION OF SURVEYOR

I DO HEREBY CERTIFY THAT THIS SUBDIVISION PLAT OF LAND OWNED BY CHARLES LEROY UTTER, NANCY UTTER AND PRICILLA J. WATSON IS A CORRECT REPRESENTATION OF THE LAND SURVEYED AND PLATTED AND THAT THE LOTS HAVE BEEN STAKED AND REFERENCE MONUMENTS HAVE BEEN SET AS SHOWN.

DATE 9-10-84
Robert E. Satterfield
ROBERT E. SATTERFIELD
SURVEYOR NO. 4238

OWNER'S ACKNOWLEDGEMENT

WE, CHARLES LEROY UTTER, NANCY UTTER AND PRICILLA J. WATSON, THE UNDERSIGNED OWNERS OF "THE PROMISED LAND SUBDIVISION", FIRST DULY SWORN, DO HEREBY ACKNOWLEDGE AND ADMIT THE BEING OF THIS PLAT OF SAID "THE PROMISED LAND SUBDIVISION" AND DO HEREBY DEDICATE LAURIE STREET, SAM'S DRIVE AND STEPHANIE DRIVE AND THAT 25' PORTION OF EDGINGTON ROAD AS SHOWN ON THE PLAT TO THE PUBLIC USE FOREVER.

Charles L. Utter
Nancy E. Utter
Pricilla J. Watson

SWORN TO BEFORE ME AND SIGNED IN MY PRESENCE THIS 10TH DAY OF SEPTEMBER, 1984.

Leroy Hester
NOTARY PUBLIC, State of Ohio
My Commission Expires Oct. 17, 1988
NOTARY PUBLIC

ENGINEER'S APPROVAL

I HEREBY APPROVE THE GENERAL LAYOUT OF "THE PROMISED LAND SUBDIVISION" AS SHOWN ON THIS PLAT.

James Beasley
BROWN COUNTY ENGINEER
SHEET 1 OF 2

PLAT NO. ASSIGNED